

## CERTIFICATE OF ANALYSIS

### Product Information

---

Product Name	CHO-K1/GNRHR/G $\alpha$ 15
Cat. No.	M00426
Lot No.	B80091710
Host Cell:	CHO-K1
Target Gene:	GNRHR
Quantity:	2 vials of frozen cells, > 1x10 <sup>6</sup> cells/vial
Shipping Condition:	Dry Ice
Recommended Storage Condition:	Liquid Nitrogen

---

### Stable Cell Line Information

**Recommended Cell Culture Medium:** Ham's F12 + 10% FBS + 400  $\mu$ g/ml G418 + 100  $\mu$ g/ml HygromycinB

**Freeze Medium:** 45% Culture Medium, 45%FBS, 10% (V/V) DMSO

**Application:** Functional assay for GNRHR

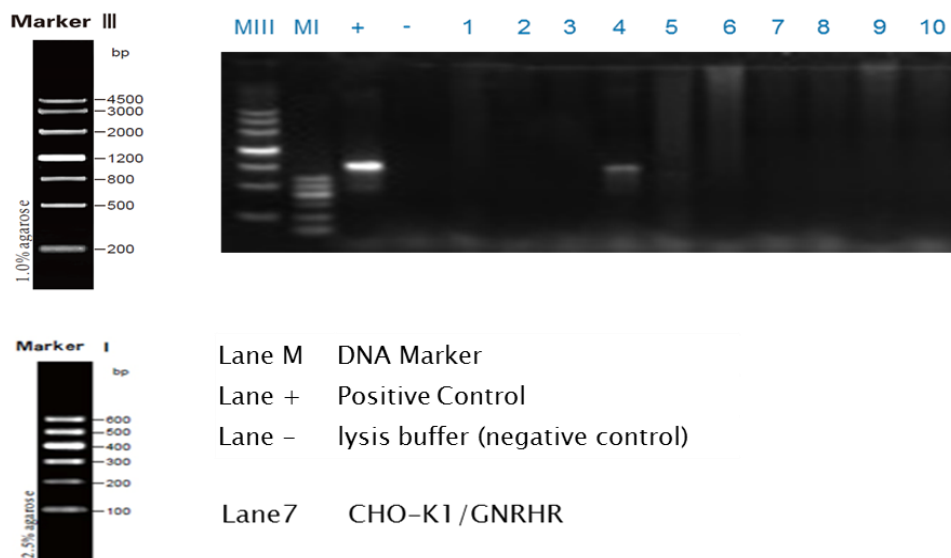
---

Test Item	Specification	Result
Mycoplasma 160	Negative.	Negative., Appendix 1
Functional assay	Calcium flux	EC <sub>50</sub> = 54.1 nM

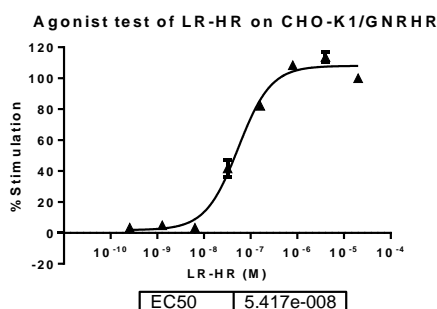
---

## Appendix

### Appendix 1: Mycoplasma 160



### Appendix 2 : Calcium assay



**Figure 1.** LH-RH-induced concentration-dependent stimulation of intracellular calcium mobilization in CHO-K1/GNRHR/Gα15 cells. The cells were loaded with Calcium-4 prior to stimulation with a GNRHR receptor agonist, LH-RH. The intracellular calcium change was measured by FLIPR. The relative fluorescent units (RFU) were plotted against the log of the cumulative doses (5-fold dilution) of LH-RH (Mean ± SD, n = 3). The EC50 of LH-RH on GNRHR co-expressing with Gα15 in CHO-K1 cells was 54.1 nM. The S/B of LH-RH on GNRHR co-expressing with Gα15 in CHO-K1 cells was 9.4

### Caution

For research use only. Not intended for household use. If you have any questions about the Certificate of Analysis, please contact our customer service representative at 1-877-436-7274 (Toll-Free), or 1-732-885-9188.

Certified by:  Date: 10/22/2017  
Department of Biologics Development Director